

2017

JG Safety Training Seminars



Training Seminars:

- Common Core Modules
 - Basics
 - Front End Loader
 - Portable Crusher
 - Portable Screen
 - Portable Stack
 - Portable Conveyor
- Supervisor Common Core

JG Stewart Construction has been operating as a portable aggregate company for over 68 years. As a company that specializes in the crushing, washing, and screening of portable material, we are well aware of the hazards and risks that all aggregate employees face in the workplace. Based on the safety training we offer to our own employees, we are providing a variety of safety training seminars to help those in the aggregate industry keep their employees safe.



CERTIFIED TRAINING SEMINARS

- Surface Mining Common Core Training
- Generic First Line Supervisor Training

These seminars are based off the requirements of the OHSA and Surface Miners Training Standards for employees working within a surface mine.

EDUCATIONAL SEMINARS

- Daily Safety Talks and Crew Meetings
- Accident Investigations
- Safety Inspections
- Risk Assessments and Job Hazard Task Analysis

These seminars are based off of real industry experience and expertise. These seminars will give your employees the confidence to work safely in their workplace.

PRIVATE TRAINING SEMINARS

JG Safety Training Seminars is offering private training seminars to cater to your company's safety requirements. We will work with you to provide the best, most relevant safety training on the date and at the location you prefer.

Please Note: To JG to guarantee a private training seminar, you must register 10+ attendees; travel fees may apply.

WHY CHOOSE JG SAFETY TRAINING SEMINARS?

- We are an industry leader in safety.
- We are flexible to meet the needs of your company and employees.
- We are willing to travel to you, if you prefer.
- We speak out of experience to provide real examples of why safety is crucial in the workplace.
- We are able to provide both the classroom and practical aspects of safety training.
- We provide on-going support for your employee's safety questions or concerns.

REGISTRATION

On each seminar information page (p. 3-12), please note the dates for the specific training seminar you are interested in.

Location: All training seminars will be held in Orillia, ON at our Main Office.

Please contact Tammy Quenneville, Safety Manager & Trainer, to assist with your booking needs at tquenneville@jgstewart.ca or 705-326-4711.



Table of Contents

Table of Contents.....	2
Common Core Modules – Basics.....	3
Common Core Module – Front End Loader.....	4
Common Core Module – Portable Screen.....	5
Common Core Module – Stacker	6
Common Core Module – Portable Conveyer.....	7
Common Core Module – Portable Crusher	8
Supervisor Common Core	9

Common Core Modules – Basics

SURFACE MINING COMMON CORE TRAINING

This training is necessary for anyone who works in a surface mine at any capacity. Whether you work there permanently or only for a few days, these basic common core modules are required. The Occupational Health and Safety Act and Surface Miners Training Standards state that anyone who works on a surface mining site must have this training before they are allowed to work.

OVERVIEW

This training seminar includes the first three common core modules.

1. Work Safely in Your Work Environment

- PPE
- Hazard Prevention
- Spills and Leaks
- WHMIS & MSDS
- Lifting
- Working Around Mobile, Stationary, and Portable Equipment
- Working in Elevated Areas
- Working Around Water
- Housekeeping
- Emergency Response Plans
- Traffic Control

2. Lock Out/Tag Out (Zero Energy State)

- Electrical Energy
- Mobile/Portable Energy
- Hydraulic & Pneumatic Energy
- Mechanical Energy
- Thermal & Chemical Energy

3. Operate Portable Hand and Power Tools

- Hand Tools
- Impact Tools
- Electrically Powered Hand Tools
- Pneumatic & Hydraulic Hand Tool
- Maintaining, Cleaning, and Storing Hand Tools



DURATION

1 Day (6-8hrs)

*Includes: Classroom & Practical Teaching;
Lunch will be provided.*

PRICING

Individual: \$299/person

Group (5+): \$249/person

DATES

- Please contact us to schedule your training seminar.
(See Pg. 1 for Contact Info)

WHO SHOULD ATTEND?

Anyone who works on a Surface Mining Site is required by law to have these three modules before starting work.

Common Core Module – Front End Loader

SURFACE MINING COMMON CORE TRAINING

This training is necessary for anyone who has been operating a front end loader. The Occupational Health and Safety Act and Surface Miners Training Standards state that within the first year of an employee operating a front end loader, they must pursue certification.

OVERVIEW

This training seminar includes the following:

Front End Loader

- Hazard Inspection
- Pre-Operation Inspections
- Mount/ Dismount
- Start-up
- Operational Inspection
- Travelling to Work Area
- Loading Material
- Loading Haulage Vehicles
- Building A Stockpile
- Road Conditions
- Emergency Situations
- Shutdown
- Refueling
- Maintenance
- Lockout

DURATION

1/2 Day (4-5hrs)

Includes: Classroom &
Practical Teaching;
Refreshments will be provided.

PRICING

Individual: \$199/person

Group (5+): \$149/person

DATES

- Please contact us to schedule your training seminar.
(See Pg. 1 for Contact Info)

WHO SHOULD ATTEND?

Any employee within the first year of operating a front end loader OR any employees who have operated for more than a year without certification



Common Core Module – Portable Screen

SURFACE MINING COMMON CORE TRAINING

This training is necessary for anyone who has been operating a portable screen. The Occupational Health and Safety Act and Surface Miners Training Standards state that within the first year of an employee operating a portable screen, they must pursue certification.

OVERVIEW

This training seminar includes the following:

Portable Screen

- Hazard Inspection
- Set-up
- Pre-Operation Inspections
- Start-up
- Operational Inspection
- Operation
- Lockout
- Blockages
- Maintenance
- Emergency Shut-Down
- Routine Shut-Down
- Moving to a New Location

DURATION

1/2 Day (4-5hrs)

Includes: Classroom &
Practical Teaching;
Refreshments will be provided.

PRICING

Individual: \$199/person

Group (5+): \$149/person

DATES

- Please contact us to schedule your training seminar.
(See Pg. 1 for Contact Info)

WHO SHOULD ATTEND?

Any employee within the first year of operating a portable screen OR any employees who have operated for more than a year without certification



Common Core Module – Stacker

SURFACE MINING COMMON CORE TRAINING

This training is necessary for anyone who has been operating a stacker. The Occupational Health and Safety Act and Surface Miners Training Standards state that within the first year of an employee operating a stacker, they must pursue certification.

OVERVIEW

This training seminar includes the following:

Stationary & Radial Stackers

- Hazard Inspection
- Pre-Operation Inspections
- Start-up
- Operational Inspection
- Operation
- Belt Adjustments
- Blockages
- Lockout
- Maintenance
- Emergency Shut-Down
- Routine Shut-Down
- Moving/ Adjusting Stacker

DURATION

1/2 Day (4-5hrs)

*Includes: Classroom &
Practical Teaching;
Refreshments will be provided.*

PRICING

Individual: \$199/person

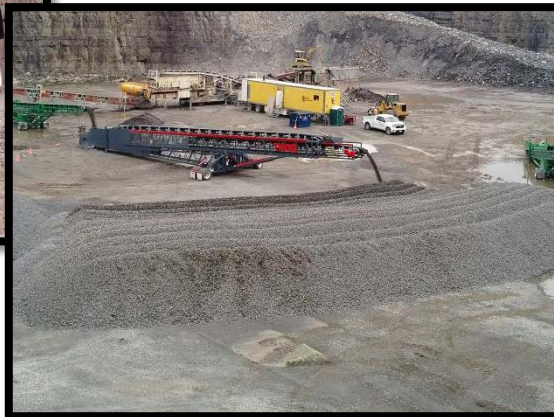
Group (5+): \$149/person

DATES

- Please contact us to schedule your training seminar.
(See Pg. 1 for Contact Info)

WHO SHOULD ATTEND?

Any employee within the first year of operating a stacker OR any employees who have operated for more than a year without certification



Common Core Module – Portable Conveyor

SURFACE MINING COMMON CORE TRAINING

This training is necessary for anyone who has been operating a portable conveyor. The Occupational Health and Safety Act and Surface Miners Training Standards state that within the first year of an employee operating a portable conveyor, they must pursue certification.

OVERVIEW

This training seminar includes the following:

Portable Conveyors

- Hazard Inspection
- Set Up
- Pre-Operation Inspections
- Start-up
- Operational Inspection
- Operation
- Belt Adjustments
- Blockages
- Lockout
- Maintenance
- Emergency Shut-Down
- Routine Shut-Down
- Moving to a New Location

DURATION

1/2 Day (4-5hrs)

*Includes: Classroom &
Practical Teaching;
Refreshments will be provided.*

PRICING

Individual: \$199/person

Group (5+): \$149/person

DATES

- Please contact us to schedule your training seminar.
(See Pg. 1 for Contact Info)

WHO SHOULD ATTEND?

Any employee within the first year of operating a conveyor OR any employees who have operated for more than a year without certification



Common Core Module – Portable Crusher

SURFACE MINING COMMON CORE TRAINING

This training is necessary for anyone who has been operating a portable crusher. The Occupational Health and Safety Act and Surface Miners Training Standards state that within the first year of an employee operating a portable crusher, they must pursue certification.

OVERVIEW

This training seminar includes the following:

Portable Crusher

- Hazard Inspection
- Set Up
- Pre-Operation Inspections
- Start-up
- Operational Inspection
- Operation
- Adjustments
- Blockages
- Lockout
- Maintenance
- Emergency Shut-Down
- Routine Shut-Down
- Moving to a New Location

DURATION

1/2 Day (4-5hrs)

Includes: Classroom &
Practical Teaching;
Refreshments will be provided.

PRICING

Individual: \$199/person

Group (5+): \$149/person

DATES

- Please contact us to schedule your training seminar.
(See Pg. 1 for Contact Info)

WHO SHOULD ATTEND?

Any employee within the first year of operating a crusher OR any employees who have operated for more than a year without certification



Supervisor Common Core

SURFACE MINING COMMON CORE TRAINING

This training is necessary for any supervisor working on a mining site. The Occupational Health and Safety Act and Surface Miners Training Standards state that within the first year of an employee leading as a supervisor, they must pursue certification.

OVERVIEW

This training seminar includes the following seven modules:



1. Follow Safety Program

- IRS, OHSA, Regulations, Company Standards
- Hazard Identification & Response
- Accident/Incident Reports
- Workplace Inspections
- Job/Task Observations
- Safety Program Compliance

2. Prepare for Emergencies

- Site Emergency Plans
- Reporting

3. Follow Health and Hygiene Procedures/Guidelines

- Identification & Response to Hazards
- Implementing Controls

4. Practice Effective Communication

- Organizational Communication Systems
- Using Effective Communication
- Crew/Safety Meetings

5. Manage Work Area Activities

- Planning, Organizing, & Assigning Work
- Monitoring Workplace Activities
- Identify & Respond to Hazards

6. Manage Employees

- Mentorship
- Disciplinary Guidelines/Procedures
- Worker Performance Evaluations
- Assigning Job Tasks

7. Assess, Control, and Apply Ventilation Systems

- Control & Respond to Airborne Contaminants/Gases

DURATION

2 Days (12-16 hrs)

*Includes: Classroom Teaching
Lunches will be provided.*

PRICING

Individual: \$599/person

Group (5+): \$499/person

DATES

- Please contact us to schedule your training seminar.
(See Pg. 1 for Contact Info)

WHO SHOULD ATTEND?

Any supervisor within the first year of leading in this role OR any supervisors who have been leading for more than a year without certification



**“Safety First is
Safety Always.”**

- Charles M. Heyes

CONTACT US

(705) - 326 - 4711



2-1118 Brodie Dr.

Severn, ON

L3V 0V2